



The Bay Regatta

PHUKET•PHANG NGA•KRABI

31st January - 4th February 2024



Co-Sponsors



Co-Sponsors

Venue Partners



Local Sponsors



Local Supporters



Event Organiser & Supporting Authorities



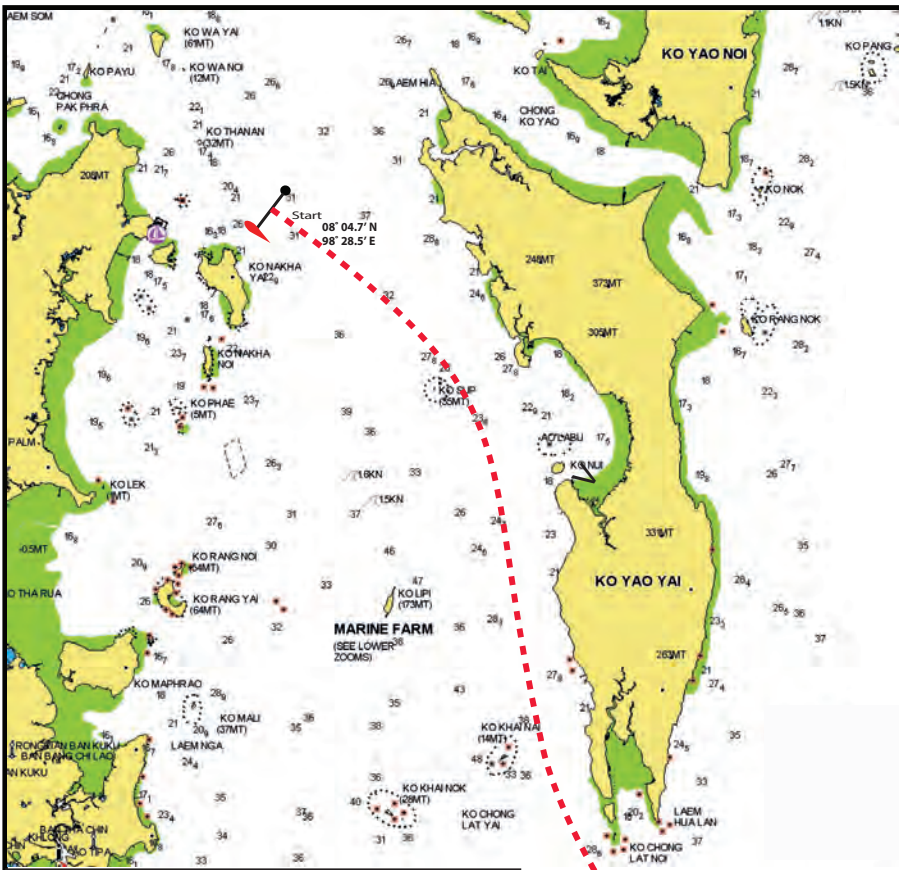
Media Partners



www.bayregatta.com

Event Management by:





The Bay Regatta

PHUKET • PHANG NGA • KRABI

- Approximate Position of Islands & Lines
- Start: 08° 04.70' N 98° 28.50' E
 - Ko Sup Group: 08° 01.21' N 98° 31.73' E
 - Ko Khai Nai: 07° 54.55' N 98° 33.13' E
 - Hin Mu Sang: 07° 48.01' N 98° 37.62' E
 - Phi Phi Don (s): 07° 43.07' N 98° 46.20' E
 - Phi Phi Le (n): 07° 41.99' N 98° 45.91' E



Hin Mu Sang
Courses are not to scale and for illustration only. Not to be used for Navigation purposes

National Park Fees:
Boats may be subject to an official National Park Fee of 400 THB per Adult and 200 THB per Child.

This is payable directly to the National Park Officials and not included in the event entry fee.



Really Good Deli Race Day (Ao Po - Phi Phi Don)



09:00 SAIL SALUTE TO ANDY DOWDEN
FIRST WARNING SIGNAL 09.10
Course 1 - 30 Miles (illustrated)
(See Sailing Instruction 5.6 for Possible Upwind Start)

START off Ko Naka Yai
Pass Ko Sup to Starboard
Pass Ko Khai Nai to Starboard
Pass Hin Mu Sang (Shark Point) to Starboard
(Please record your time as you pass Hin Mu Sang)
FINISH between the southern most point of Phi Phi Don and the Northern Tip of Phi Phi Le.
07° 43.07' N , 98° 46.20' E & 07° 41.99' N , 98° 45.91' E
(If a committee Vessel is not on station, Please record your time as you pass through the line and report to the committee at the earliest opportunity)

The suggested anchorage is Tonsai Bay.
(See separate page for Party location and details)

Longtails will be operating in Tonsai Bay for boats without dinghies.

Phi Phi Longtail Contact: Mr. Aof 086 289 4880
Cost approximately 800 Baht for 8-10 pax.



Please note:
There is an official Phi-Phi landing fee of 20 Baht per person for all arrivals.
A boat anchoring fee of 50 Baht per vessel may be charged by National Park officials in lieu of other park fees.

Phi Phi Presentation Venue.



National Park Fees:
Boats may be subject to an official National Park Fee of 400 THB per Adult and 200 THB per Child. This is payable directly to the National Park Officials and not included in the event entry fee.

A boat anchoring fee of 50 Baht per vessel may be charged in Phi Phi by Park officials in lieu of other park fees.

On-line results are available at:
bayregatta.com/2024-results

Presentations 18:00 to 20:00.
Don't forget your pass.
Official entry includes buffet and
freeflow Beer/Cocktails.



Please note:
There is an official Phi-Phi landing fee of 20 Baht per person for all arrivals.

Longtails will be operating in Tonsai Bay for boats without dinghies.
Phi Phi Longtail Contact: Mr. Aof 086 289 4880
Cost approximately 800 Baht for 8-10 pax.





Ko Deng

Courses are not to scale and for illustration only.
Not to be used for Navigation purposes

Approximate Position of Islands & Lines

Start:	East Coast Phi Phi Don
Ko Samet:	07° 59.19' N 98° 44.60' E
Ko Mai Phai:	07° 49.05' N 98° 47.78' E
Ko Khom (Lao Pei):	07° 55.83' N 98° 48.33' E
Ko Dam Khwan	07° 57.27' N 98° 48.45' E
Ko Dam Hok (n)	07° 58.35 'N 98° 48.71' E
Ko Ya Mann	07° 56.62 'N 98° 49.31' E
Krabi/Port Takola	
Channel Entrance Buoy	07° 58.03 'N 98° 53.93' E



National Park Fees:

Boats may be subject to an official National Park Fee of 400 THB per Adult and 200 THB per Child.

This is payable directly to the National Park Officials and not included in the event entry fee.

A boat anchoring fee of 50 Baht per vessel may be charged in Ao Nang by Park officials in lieu of other park fees.



Race Day 2 - (Phi Phi-Don to Krabi)

FIRST WARNING SIGNAL 10.00

Course 2 - 17 Miles (illustrated)

(See Sailing Instruction 5.6 for Possible Upwind Start)

- START off Phi Phi Don
- Pass Between Phi Phi Don and Hin Klang
- Pass Ko Yung to Starboard
- Pass Ko Khom (Lao Pe) to Starboard
- Pass Ko Dam Khwan to Port
- Pass Ko Dam Hok to Port
- FINISH off Ko Ya Mann

Course 2B - 14 Miles (illustrated)

(See Sailing Instruction 5.6 for Possible Upwind Start)

- START off Phi Phi Don
- Pass Ko Mai Phai to Port
- Pass Ko Khom (Lao Pe) to Starboard
- Pass Ko Dam Khwan to Port
- Pass Ko Dam Hok to Port
- FINISH off Ko Ya Mann

Course 3 - 20 Miles (illustrated)

(See Sailing Instruction 5.6 for Possible Upwind Start)

- START off Phi Phi Don
- Pass Ko Mai Phai to Port
- Round Ko Samet to Starboard
- FINISH off Ko Ya Mann

If there is any discrepancy between the course diagram and the written description, then the written description will prevail.



The Bay Regatta

PHUKET • PHANG NGA • KRABI

อุทยานแห่งชาติ หาดคนพรัดบธารา หมู่เกาะพีพี

Krabi Host and Day 3 (3rd Feb) Presentation Party

Presentations for Day 2 & 3 will be held on 3rd February at Vacation Village, Phra Nang Inn. 18:00 to 20:00.

Don't forget your pass. Official entry includes BBQ buffet and freeflow Beer/Cocktails.

VACATION VILLAGE
Phra Nang Inn

Welcome event for those visiting Port Takola Marina (2nd Feb).

COFFEE PORT
LIVE MUSIC
FEATURING
LEGENDARY JAZZ DIVA
NADDA VIYAKARN
THE BEST SONG AWARD WINNER OF THE WORLD POPULAR SONG FESTIVAL

at Port Takola Yacht Marina, Krabi
2.2.2024 : 4 PM
Free Entry

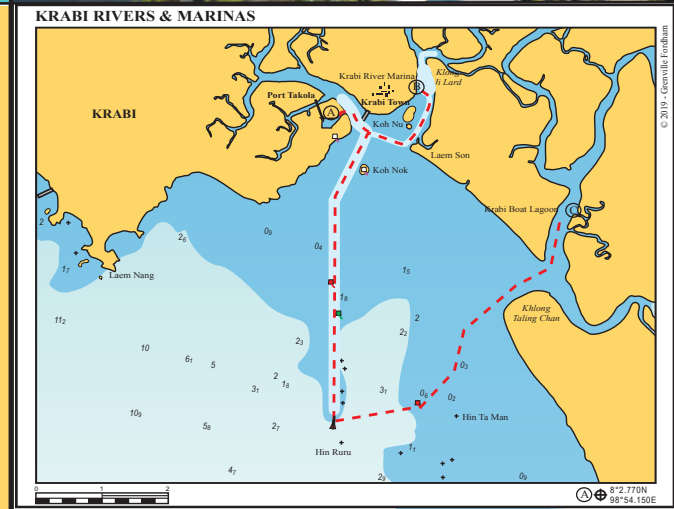


Day 2 is a free evening to enjoy Krabi and the surrounding anchorages and marina facilities.

For yachts without dinghies, a "pay as you go" longtail service is available in Ao Nang.

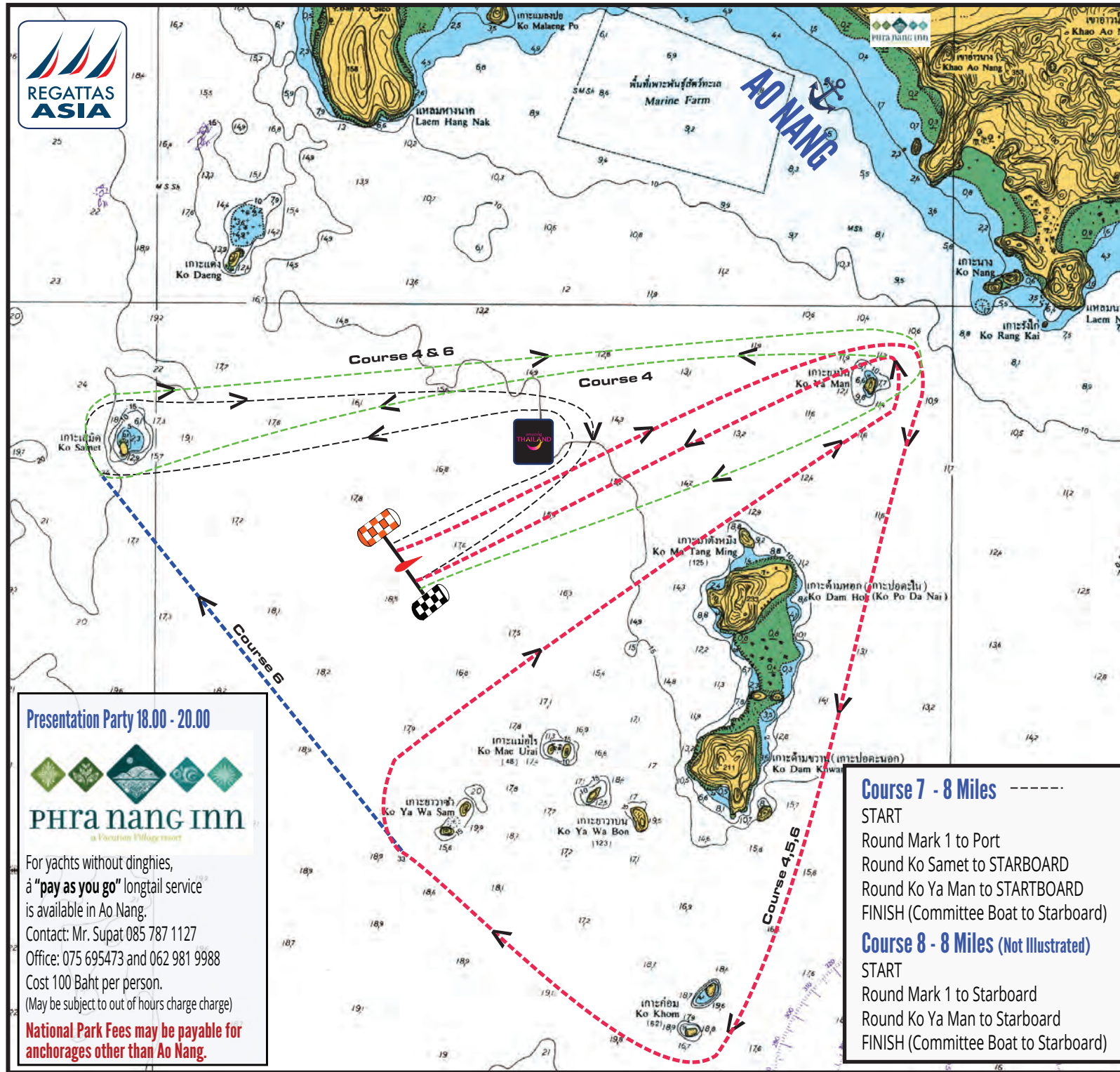
Contact: Mr. Supat 085 787 1127
Office: 075 695473 and 062 981 9988

The Bay Regatta
PHUKET • PHANG NGA • KRABI





The Bay Regatta
PHUKET • PHANG NGA • KRABI



Krabi Race Day (East)

FIRST WARNING SIGNAL 10.00

Course 4 - 28 Miles -----
START
 Round Ko Ya Man to STARBOARD
 Pass Ko Dam Khwan to STARBOARD
 Round Ko Khom (South) to STARBOARD
 Round Ko Ya Wa Sam to STARBOARD
 Round Ko Ya Man to PORT
 Round Ko Samet to STARBOARD
 Round Ko Ya Man to STARTBOARD
FINISH (Committee Boat to Starboard)

Course 5 - 18 Miles
START
 Round Ko Ya Man to STARBOARD
 Pass Ko Dam Khwan to STARBOARD
 Round Ko Khom (South) to STARBOARD
 Round Ko Ya Wa Sam to STARBOARD
 Round Ko Ya Man to PORT
FINISH (Committee Boat to Starboard)

Course 6 - 22 Miles -----
START
 Round Ko Ya Man to STARBOARD
 Pass Ko Dam Kwan to STARBOARD
 Round Ko Khom (South) to STARBOARD
 Pass Ko Ya Wa Sam to STARBOARD
 Round Ko Samet to STARBOARD
 Round Ko Ya Man to STARTBOARD
FINISH (Committee Boat to Starboard)

Course 7 - 8 Miles -----
START
 Round Mark 1 to Port
 Round Ko Samet to STARBOARD
 Round Ko Ya Man to STARTBOARD
FINISH (Committee Boat to Starboard)

Course 8 - 8 Miles (Not Illustrated)
START
 Round Mark 1 to Starboard
 Round Ko Ya Man to Starboard
FINISH (Committee Boat to Starboard)

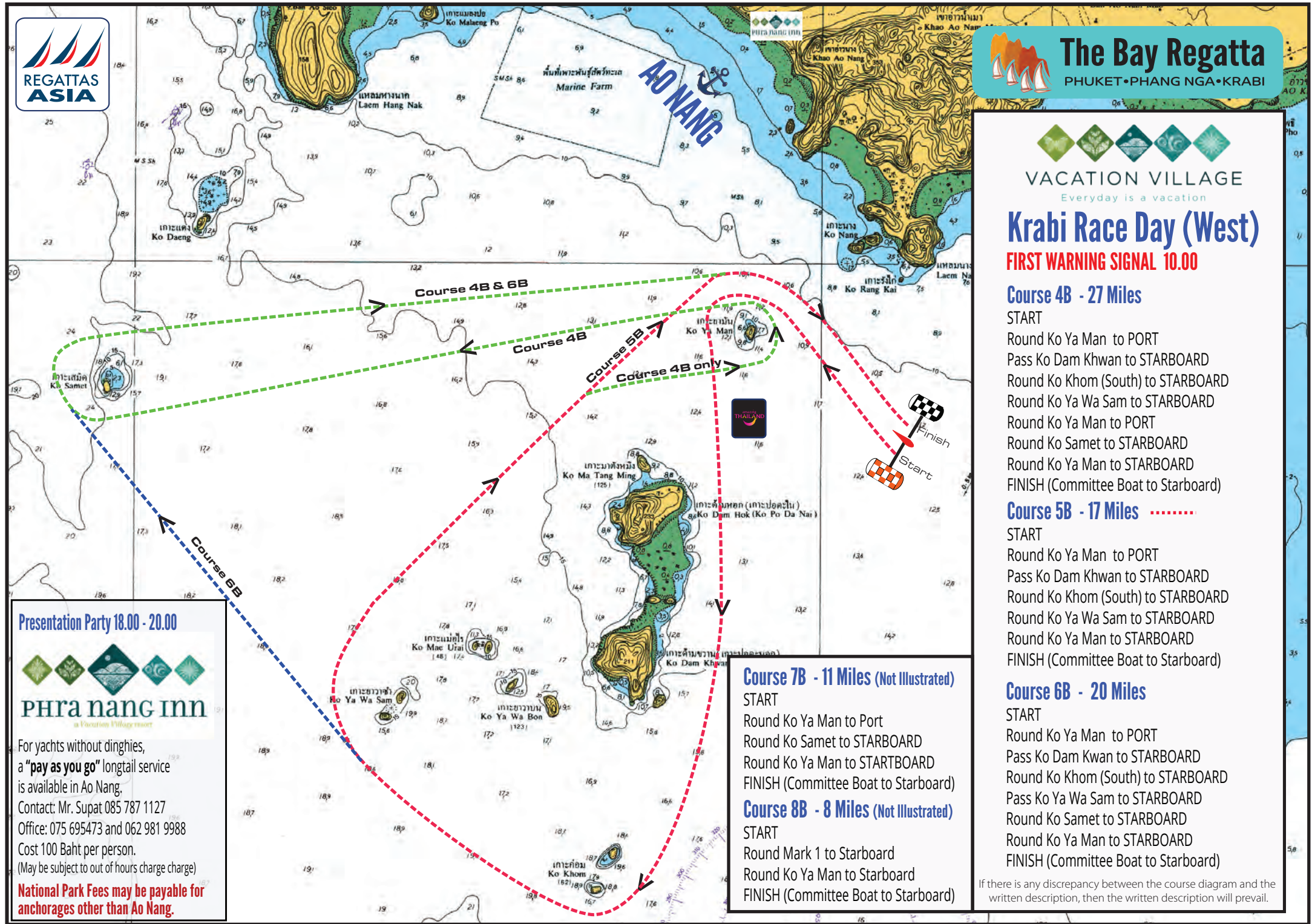
If there is any discrepancy between the course diagram and the written description, then the written description will prevail.

Presentation Party 18.00 - 20.00

PHra nang inn
a Vacation Village resort

For yachts without dinghies,
à "pay as you go" longtail service
is available in Ao Nang.
Contact: Mr. Supat 085 787 1127
Office: 075 695473 and 062 981 9988
Cost 100 Baht per person.
(May be subject to out of hours charge charge)

National Park Fees may be payable for anchorages other than Ao Nang.



Krabi Race Day (West)

FIRST WARNING SIGNAL 10.00

Course 4B - 27 Miles

START
Round Ko Ya Man to PORT
Pass Ko Dam Khwan to STARBOARD
Round Ko Khom (South) to STARBOARD
Round Ko Ya Wa Sam to STARBOARD
Round Ko Ya Man to PORT
Round Ko Samet to STARBOARD
Round Ko Ya Man to STARBOARD
FINISH (Committee Boat to Starboard)

Course 5B - 17 Miles

START
Round Ko Ya Man to PORT
Pass Ko Dam Khwan to STARBOARD
Round Ko Khom (South) to STARBOARD
Round Ko Ya Wa Sam to STARBOARD
Round Ko Ya Man to STARBOARD
FINISH (Committee Boat to Starboard)

Course 6B - 20 Miles

START
Round Ko Ya Man to PORT
Pass Ko Dam Kwan to STARBOARD
Round Ko Khom (South) to STARBOARD
Pass Ko Ya Wa Sam to STARBOARD
Round Ko Samet to STARBOARD
Round Ko Ya Man to STARBOARD
FINISH (Committee Boat to Starboard)

Course 7B - 11 Miles (Not Illustrated)

START
Round Ko Ya Man to Port
Round Ko Samet to STARBOARD
Round Ko Ya Man to STARTBOARD
FINISH (Committee Boat to Starboard)

Course 8B - 8 Miles (Not Illustrated)

START
Round Mark 1 to Starboard
Round Ko Ya Man to Starboard
FINISH (Committee Boat to Starboard)

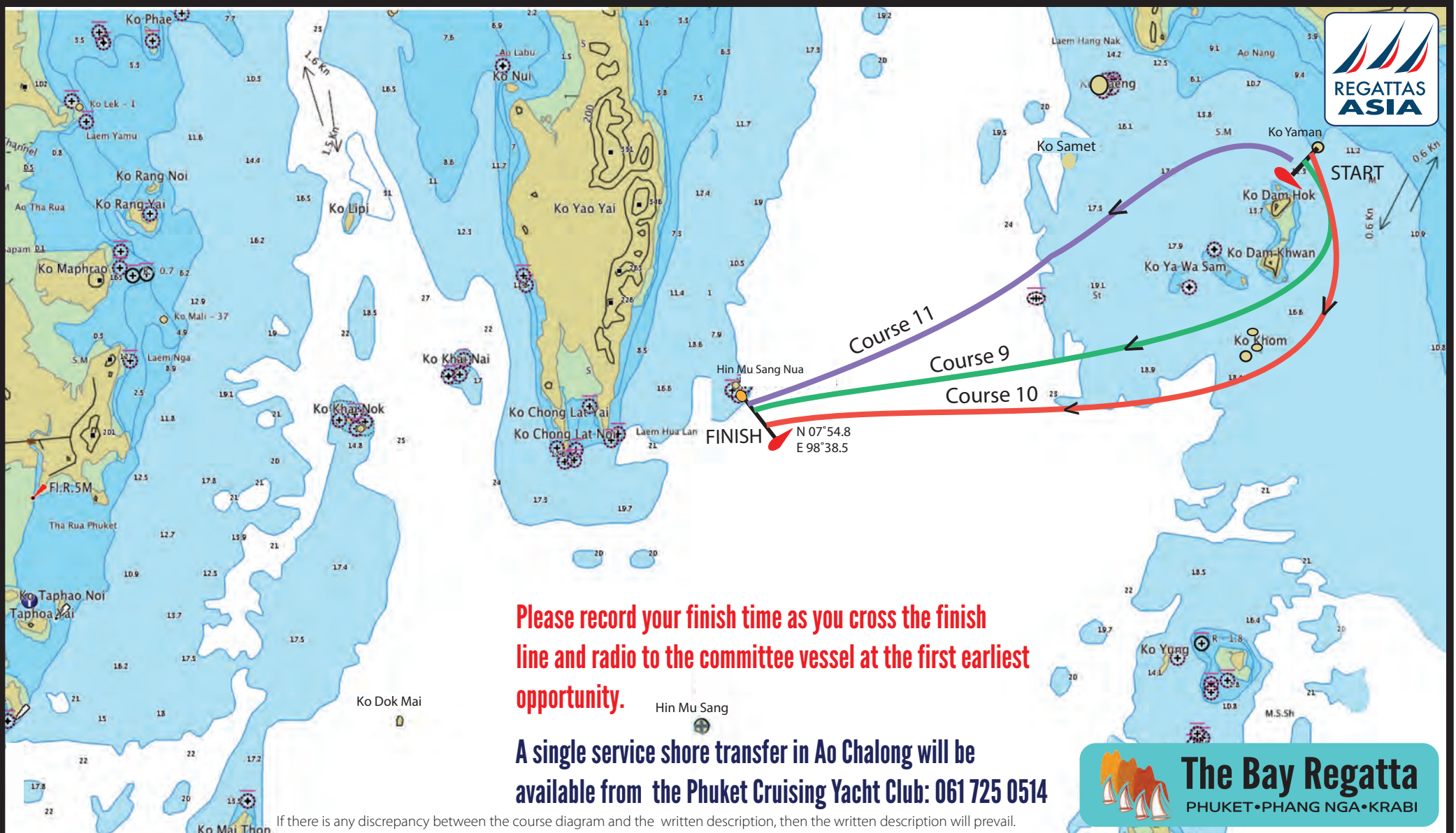
Presentation Party 18.00 - 20.00

PHra nang inn
a Vacation Village resort

For yachts without dinghies,
a "pay as you go" longtail service
is available in Ao Nang.
Contact: Mr. Supat 085 787 1127
Office: 075 695473 and 062 981 9988
Cost 100 Baht per person.
(May be subject to out of hours charge charge)

National Park Fees may be payable for anchorages other than Ao Nang.

If there is any discrepancy between the course diagram and the written description, then the written description will prevail.



Please record your finish time as you cross the finish line and radio to the committee vessel at the first earliest opportunity.


A single service shore transfer in Ao Chalong will be available from the Phuket Cruising Yacht Club: 061 725 0514

If there is any discrepancy between the course diagram and the written description, then the written description will prevail.

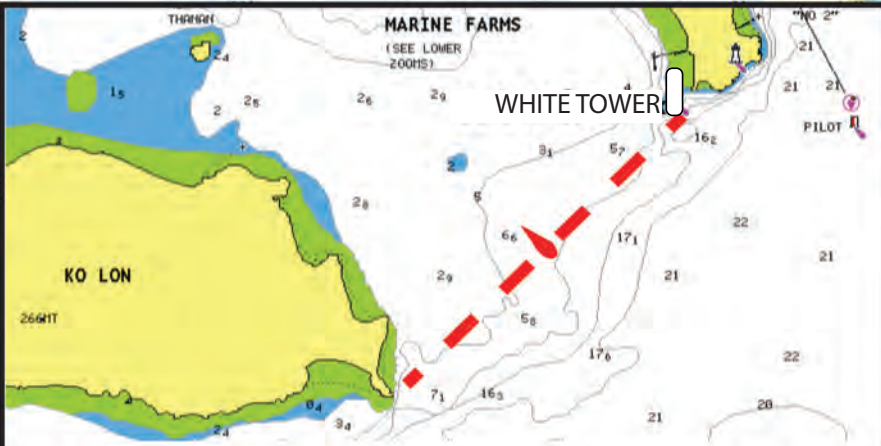


Course 9 - 13 Miles 
START
Pass Ko Dam Hok to Starboard
Pass Ko Dam Khwan to Starboard
FINISH (Hin Mu Sang Nua)

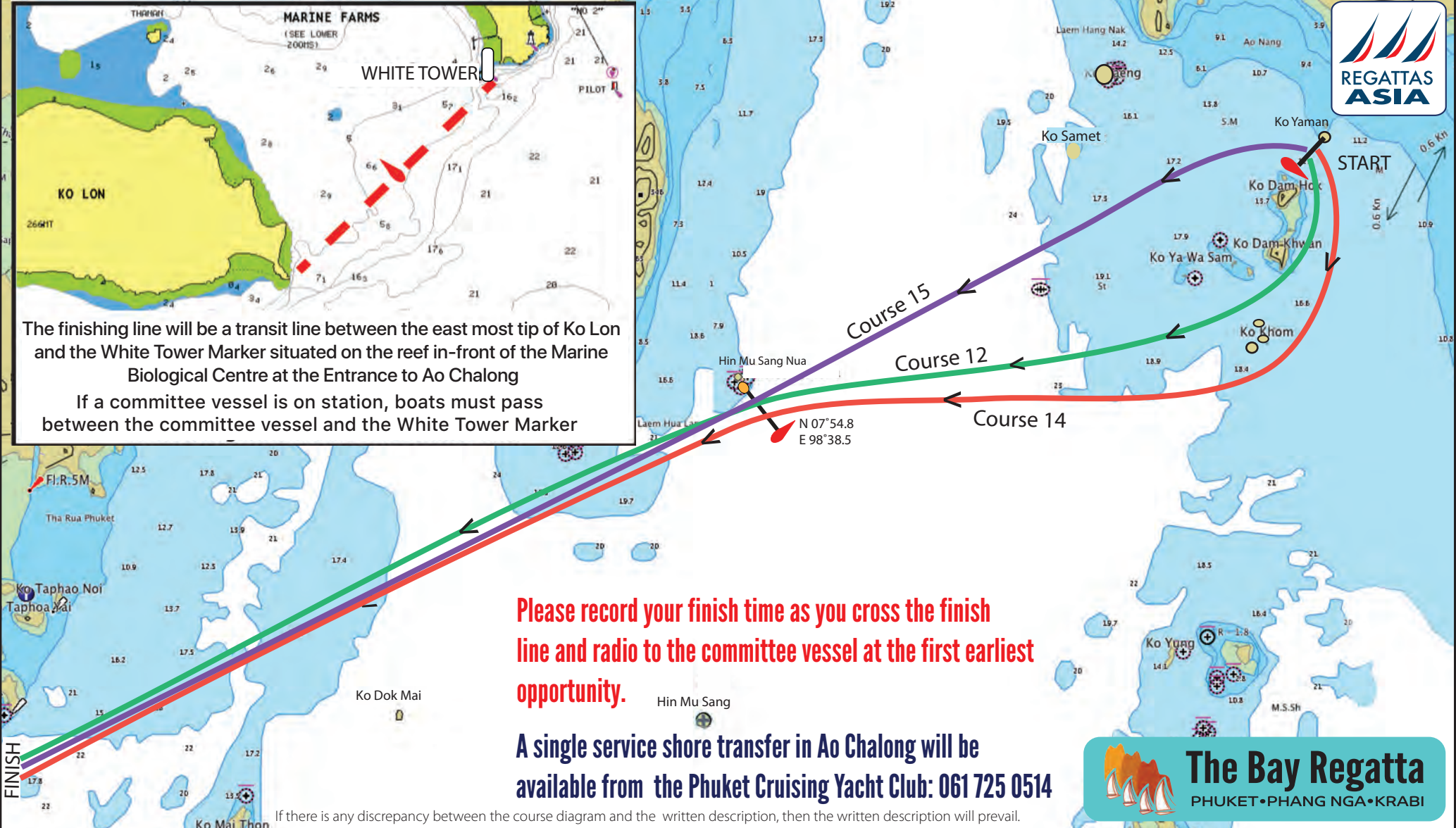
Course 10 - 14 Miles 
START
Pass Ko Dam Hok and Koh Dam Khwan to Starboard
Pass Ko Khom Group to Starboard, FINISH (Hin Mu Sang Nua)

FIRST WARNING SIGNAL 08.00
Course 11 - 11 Miles 
START (Down Wind, Committee Boat to Port)
FINISH (Hin Mu Sang Nua)
If there is any discrepancy between the course diagram and the written description, then the written description will prevail





The finishing line will be a transit line between the east most tip of Ko Lon and the White Tower Marker situated on the reef in-front of the Marine Biological Centre at the Entrance to Ao Chalong
 If a committee vessel is on station, boats must pass between the committee vessel and the White Tower Marker



Please record your finish time as you cross the finish line and radio to the committee vessel at the first earliest opportunity.

A single service shore transfer in Ao Chalong will be available from the Phuket Cruising Yacht Club: 061 725 0514

If there is any discrepancy between the course diagram and the written description, then the written description will prevail.

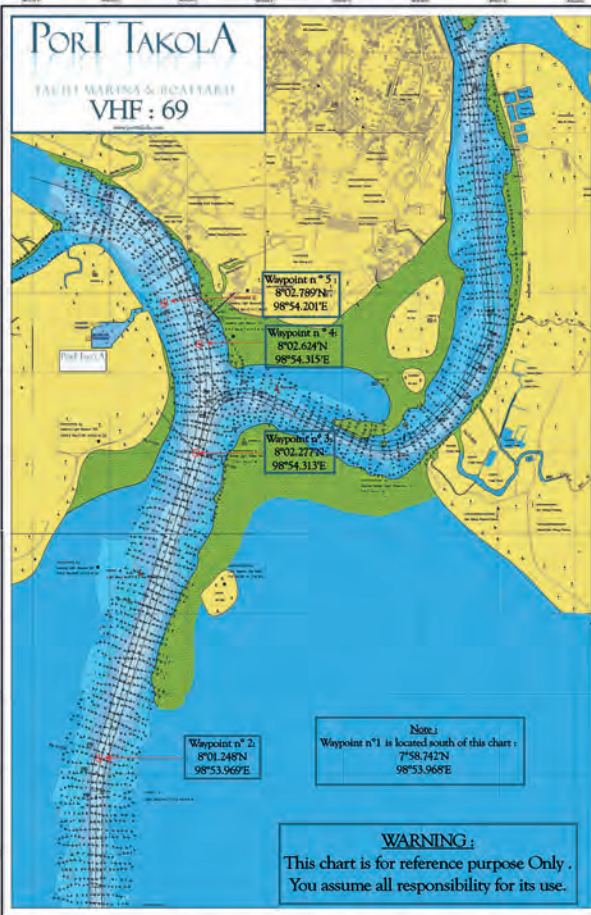
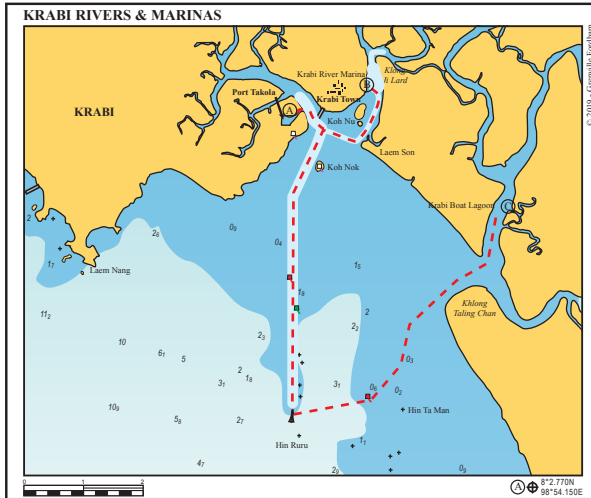


Course 12 - 28 Miles █
 START between Committee Vessel and Ko Yaman
 Pass Ko Dam Hok to Starboard
 Pass Ko Dam Khwan to Starboard
 Through Gate (Hin Mu Sang Nua)
 FINISH (Entrance to Ao Chalong - See Note.)

Course 14 - 29 Miles █
 START between Committee Vessel and Ko Yaman
 Pass Ko Dam Hok/Khwan to Starboard
 Pass Ko Khom Group to Starboard
 Through Gate (Hin Mu Sang Nua)
 FINISH (Entrance to Ao Chalong - See Note.)

FIRST WARNING SIGNAL 08.00
Course 15 - 26 Miles █
 START (Downwind Committee Vessel to Port)
 Through Gate (Hin Mu Sang Nua)
 FINISH (Entrance to Ao Chalong - See Note.)





Tide Timetables Phuket and Krabi

เกาะตะพานน้อย (ภูเก็ต)
Ko Taphao Noi (Phuket)

ปากน้ำกระบี่ (กระบี่)
Pak Nam Krabi (Krabi)

ภูมิภาคพันธ์ FEBRUARY				ภูมิภาคพันธ์ FEBRUARY			
เวลา	สูง (ม.)	เวลา	สูง (ม.)	เวลา	สูง (ม.)	เวลา	สูง (ม.)
TIME	HT (m.)	TIME	HT (m.)	TIME	HT (m.)	TIME	HT (m.)
1	0135 2.74	16	0221 2.64	1	0156 3.16	16	0245 3.04
TH	0749 0.96	FR	0838 0.98	TH	0813 0.96	FR	0845 0.98
	1405 2.68		1457 2.68		1430 3.08		1522 3.10
	2006 1.24		2108 1.23		2028 1.25		2112 1.31
2	0202 2.56	17	0302 2.33	2	0222 2.94	17	0318 2.68
FR	0817 1.09	SA	0916 1.25	FR	0840 1.12	SA	0914 1.30
	1438 2.59		1546 2.47		1505 2.96		1604 2.82
	2044 1.36		2212 1.46		2102 1.42		2158 1.60
3	0236 2.37	18	0415 2.06	3	0250 2.70	18	0408 2.34
SA	0855 1.24	SU	1017 1.51	SA	0912 1.31	SU	0950 1.62
	1524 2.47		1726 2.29		1550 2.81		1727 2.57
	2141 1.51				2149 1.62		
4	0332 2.17	19	0039 1.56	4	0334 2.46	19	0030 1.77
SU	0955 1.40	MO	0646 1.96	SU	1000 1.51	MO	0659 2.16
	1643 2.37		1244 1.64		1713 2.68		1250 1.84
	2327 1.59		1938 2.31		2336 1.76		1959 2.59
5	0535 2.04	20	0232 1.38	5	0559 2.28	20	0247 1.53
MO	1136 1.50	TU	0900 2.13	MO	1150 1.66	TU	0902 2.37
	1846 2.38		1435 1.49		1912 2.72		1500 1.62
			2104 2.51				2120 2.84
6	0136 1.46	21	0322 1.17	6	0152 1.57	21	0335 1.24
TU	0743 2.12	WE	0941 2.32	TU	0805 2.40	WE	0955 2.63
	1329 1.43		1527 1.29		1400 1.54		1550 1.37
	2019 2.57		2145 2.71		2044 2.94		2206 3.09
7	0248 1.20	22	0357 0.99	7	0300 1.26	22	0414 1.01
WE	0900 2.32	TH	1010 2.48	WE	0920 2.65	TH	1030 2.85
	1448 1.24		1603 1.12		1514 1.31		1630 1.17
	2119 2.82		2215 2.88		2146 3.22		2241 3.29
8	0336 0.93	23	0427 0.85	8	0355 0.95	23	0446 0.85
TH	0951 2.53	FR	1036 2.62	TH	1015 2.91	FR	1100 3.01
	1543 1.02		1634 0.98		1612 1.06		1702 1.03
	2204 3.07		2242 3.00		2236 3.48		2310 3.43
9	0419 0.68	24	0453 0.75	9	0444 0.68	24	0517 0.75
FR	1034 2.73	SA	1101 2.75	FR	1101 3.13	SA	1126 3.14
	1630 0.83		1701 0.89		1702 0.85		1732 0.94
	2245 3.26		2306 3.07		2319 3.69		2335 3.51
10	0500 0.49	25	0518 0.68	10	0529 0.46	25	0545 0.68
SA	1114 2.91	SU	1126 2.85	SA	1145 3.32	SU	1152 3.25
	1714 0.69		1728 0.82		1748 0.69		1759 0.88
	2322 3.39		2330 3.10		2359 3.83		
11	0541 0.36	26	0543 0.64	11	0610 0.32	26	0000 3.55
SU	1152 3.04	MO	1149 2.93	SU	1225 3.48	MO	0611 0.64
	1755 0.61		1754 0.80		1829 0.60		1218 3.35
			2355 3.08				1823 0.84
12	0000 3.42	27	0606 0.64	12	0035 3.87	27	0023 3.55
MO	0619 0.31	TU	1215 2.97	MO	0647 0.27	TU	0634 0.63
	1230 3.11		1819 0.81		1302 3.58		1243 3.42
	1834 0.61				1904 0.58		1846 0.83
13	0035 3.35	28	0018 3.02	13	0111 3.82	28	0045 3.50
TU	0656 0.37	WE	0629 0.69	TU	0720 0.32	WE	0657 0.65
	1307 3.11		1239 2.98		1339 3.60		1307 3.45
	1912 0.69		1845 0.86		1936 0.66		1911 0.85
14	0111 3.18	29	0043 2.91	14	0144 3.65	29	0108 3.39
WE	0730 0.51	TH	0650 0.77	WE	0749 0.47	TH	0720 0.73
	1343 3.03		1303 2.94		1414 3.52		1333 3.42
	1948 0.82		1909 0.94		2007 0.81		1935 0.94
15	0146 2.93			15	0215 3.38		
TH	0804 0.72			TH	0817 0.70		
	1418 2.88				1447 3.34		
	2026 1.01				2038 1.04		

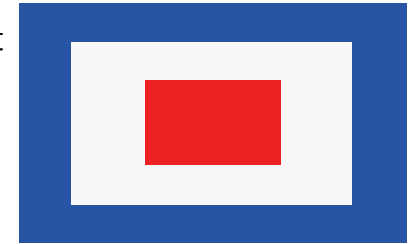
Important Information (All Courses)

Special Signals

Add a New FIRST Windard Mark

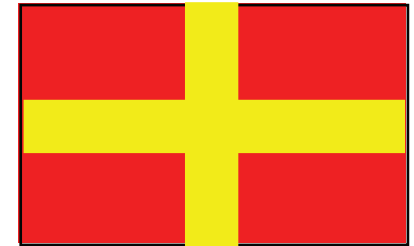
Code Flag W displayed on the start boat means ADD an new FIRST Mark to the Course Description.

This Mark will be to Windward and is to be rounded in the direction indicated by the Card/Flag displayed: **RED** to Port, **Green** to Starboard



Return to Finish

A committee boat at a mark displaying **Code Flag R** (red background with yellow cross) means complete the current rounding or passing and race directly to the finish line.



Schedule of Races

- Race Day 1 - 1st Feb
- Race Day 2 - 2nd Feb
- Race Day 3 - 3rd Feb
- Race Day 4 - 4th Feb

- Tribute Signal 09.00
- First Warning Signal 10.00
- First Warning Signal 10.00
- First Warning Signal 08.00

Upcoming Thailand Regattas 2024

- PYC Sailors Regatta
- Top of the Gulf (Pattaya)
- Samui Regatta
- PYC Yacht Sales Co. Regatta
- PYC Jai Dee Regatta
- Phuket King's Cup Regatta

- 29th - 31st March
- Postponed
- 25th May - 1st June
- 6th -11th July
- 16th - 18th November
- 30th Nov - 7th Decemember

