



**The Bay Regatta**  
PHUKET • PHANG NGA • KRABI

# The Bay Regatta

5th - 9th February, 2020

**PHUKET • PHANG NGA • KRABI**



**The Bay Regatta**  
PHUKET • PHANG NGA • KRABI

Co-Sponsors

Co-Sponsors



2020 Venue Partners

2020 Regatta Partners



Local Supporters

Event Organiser and Supporting Authorities

Media Partners



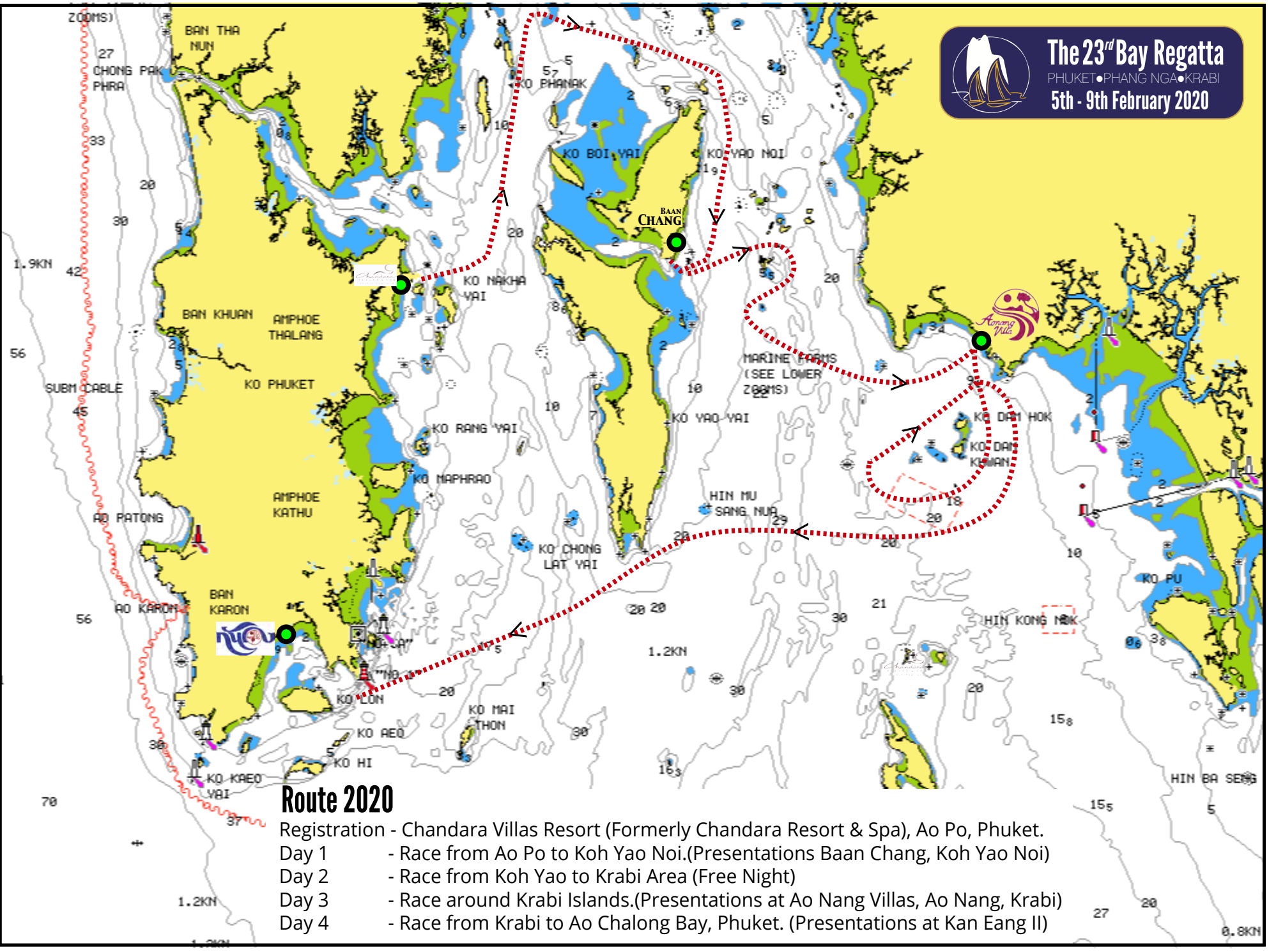
[www.bayregatta.com](http://www.bayregatta.com)

Event Management by:



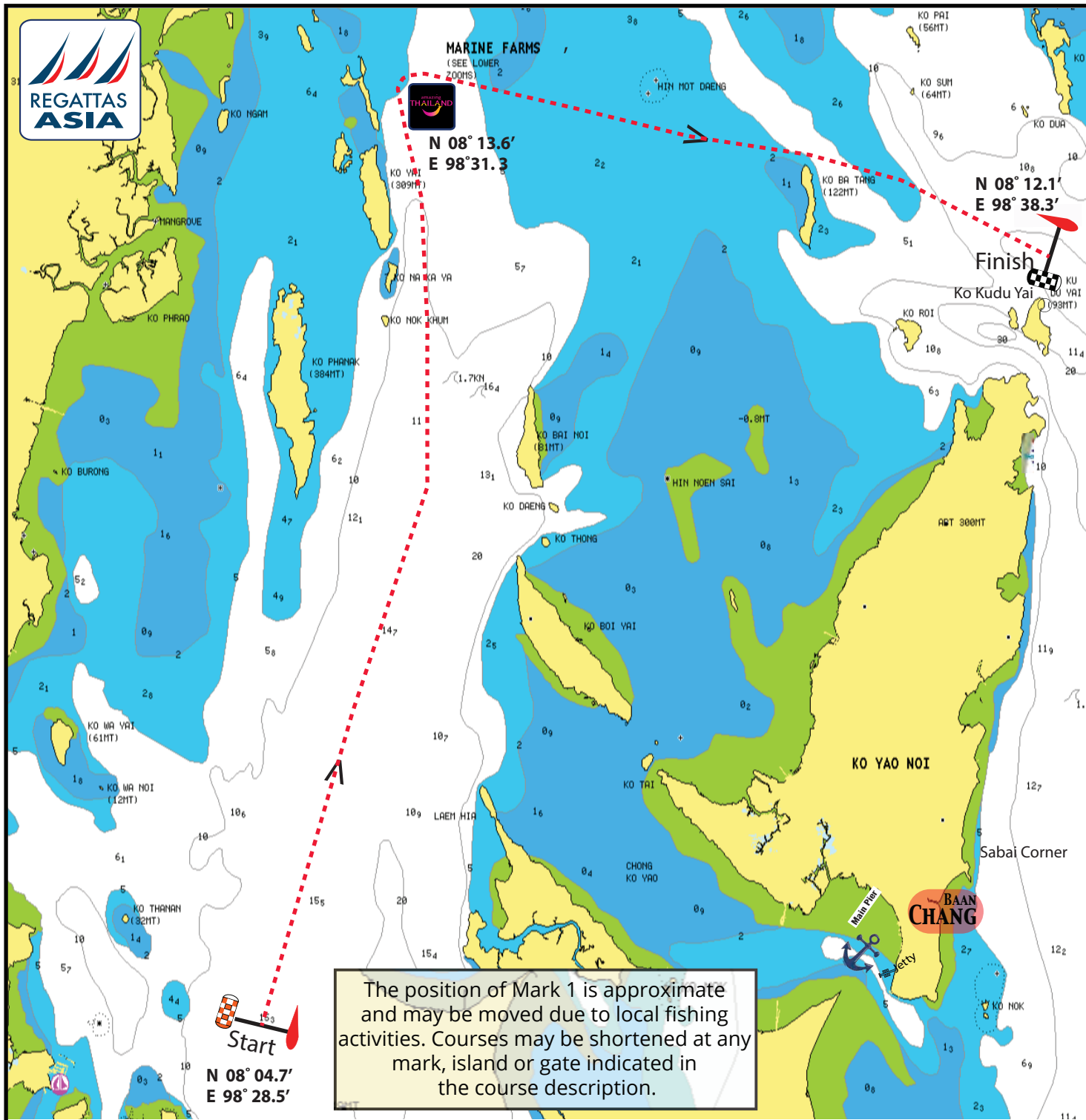


**The 23<sup>rd</sup> Bay Regatta**  
 PHUKET • PHANG NGA • KRABI  
 5th - 9th February 2020



### Route 2020

- Registration - Chandara Villas Resort (Formerly Chandara Resort & Spa), Ao Po, Phuket.
- Day 1 - Race from Ao Po to Koh Yao Noi.(Presentations Baan Chang, Koh Yao Noi)
- Day 2 - Race from Koh Yao to Krabi Area (Free Night)
- Day 3 - Race around Krabi Islands.(Presentations at Ao Nang Villas, Ao Nang, Krabi)
- Day 4 - Race from Krabi to Ao Chalong Bay, Phuket. (Presentations at Kan Eang II)



The position of Mark 1 is approximate and may be moved due to local fishing activities. Courses may be shortened at any mark, island or gate indicated in the course description.



# The Jungceylon/SEA Yachting Race Day (Ao Po - Ko Yao Noi)

**FIRST WARNING SIGNAL 09.00**

**Course 1 - 17 Miles (illustrated)**

- START** off Ko Naka Yai
- Pass** Ko Phanak to **PORT**
- Pass** Ko Na Ka Ya to **PORT**
- Round** Mark 1, NE of Ko Yai to **STARBOARD**
- Pass** Hin Mot Deng to **PORT**
- Pass** Ko Batang to **STARBOARD**
- FINISH** off Ko Kudu Yai

After finish, proceed South (Approx 7 Miles) to the Anchorage for the Presentation Party 18.00 - 21.00

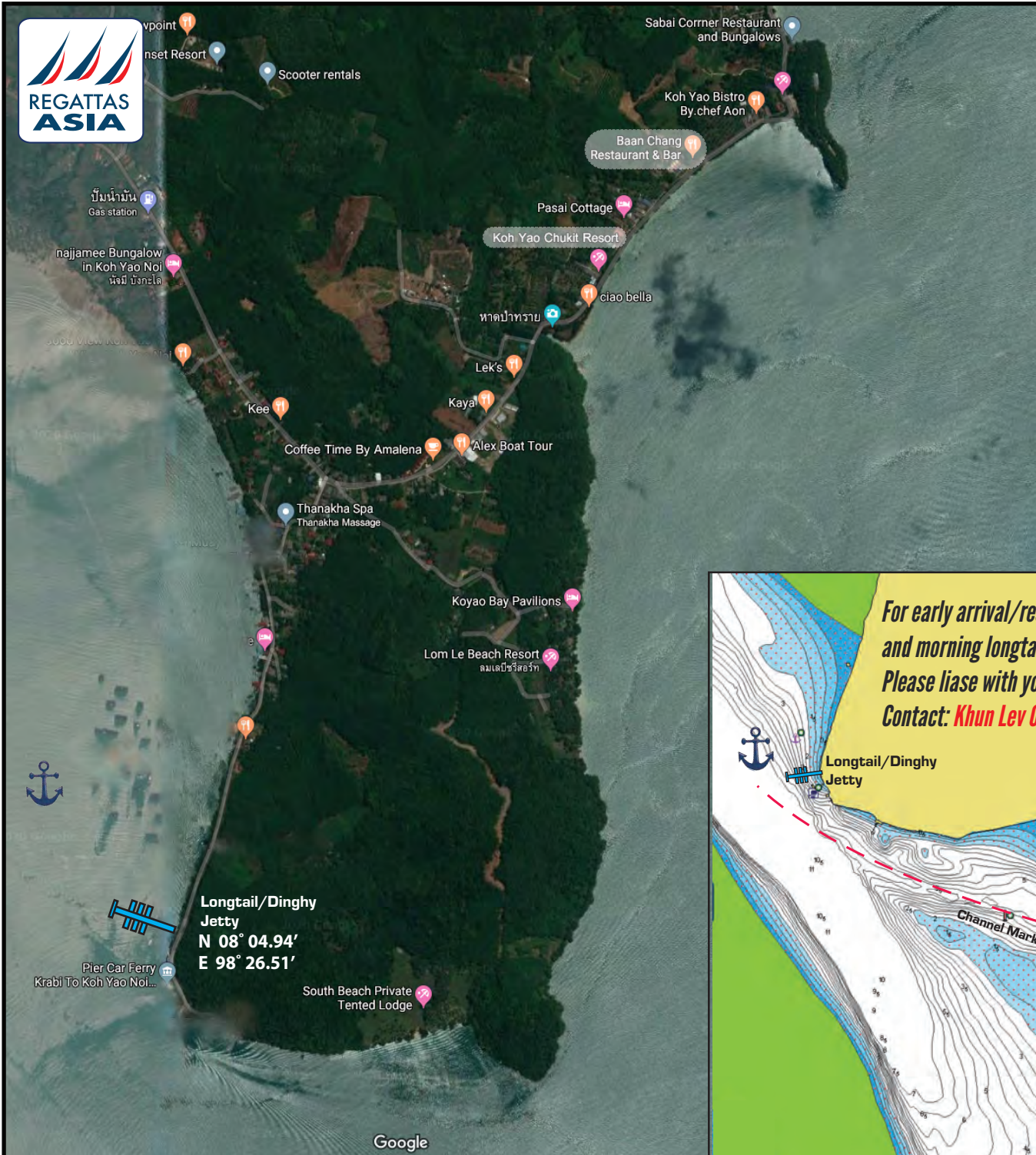
The suggested anchorage is between Ko Yao Noi and Ko Yao Ya (See separate Entrance to Ko Yao page for details)

Complementary Longtail and Songtao transfers are available to the Chukit Dachanan Resort and Baan Chang Restaurant for the presentation party only between 15.00 - 21.30

Chargable Songtao Transport to resort other than Chukit Dachanan are also available from the Floating Blue Jetty.

For resort transfers and morning longtail (Chargable), please liase with your resort.





# Entrance to Ko Yao Anchorage

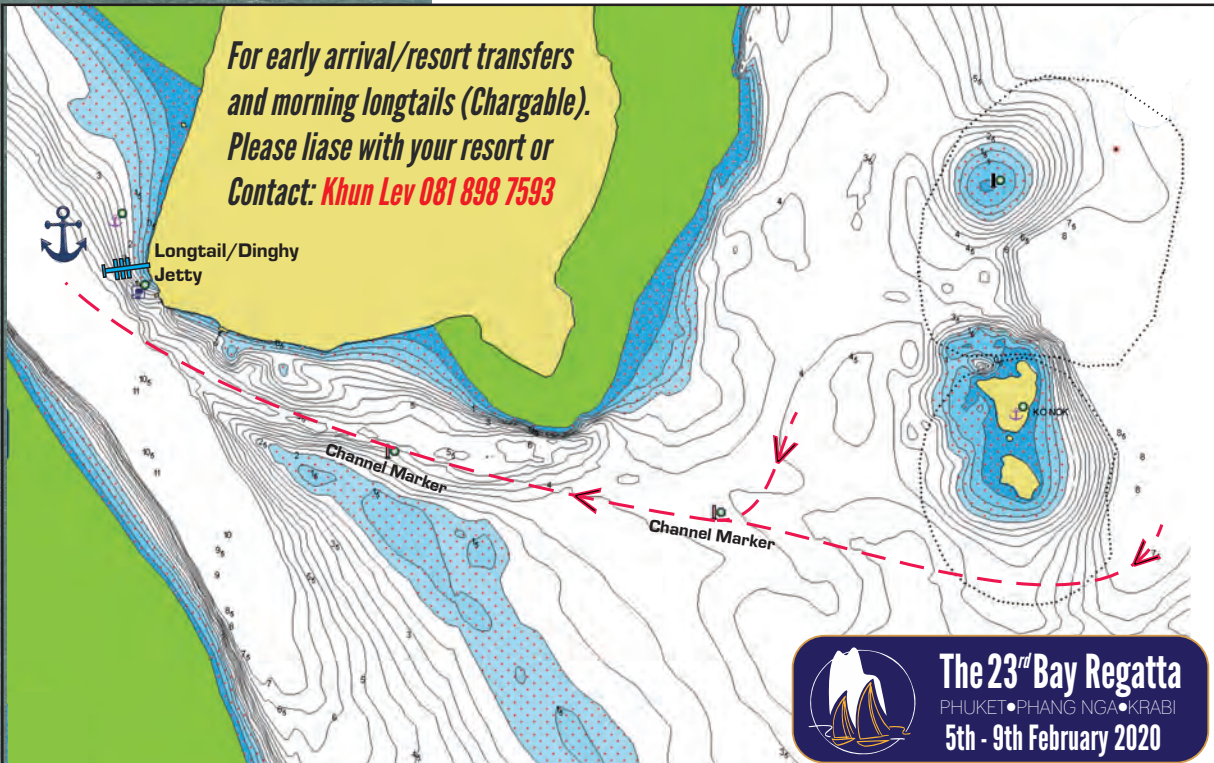
After finish, proceed South (Approx 7 Miles) to the anchorage for the Baan Chang Restaurant Presentation Party 18.00 - 21.00.

**THE SUGGESTED ANCHORAGE IS BETWEEN KO YAO NOI AND KO YAO YAI.**

Enter the channel either from the North East or East. There are **2 Channel Markers** indicating the passage, to the North of the **Sand Bank**, which is exposed at Low tide.

Head into the channel, passing the concrete transport pier. Proceed to the anchorage. The Longtail/Dinghy Pier is a floating jetty. Anchor in the deeper water beyond the floating jetty, avoiding the floating fish farms.

**COMPLEMENTARY LONGTAIL AND SONGTAO TRANSFERS WILL OPERATE TO THE CHUKIT RESORT AND BAAN CHANG FOR THE PRESENTATION PARTY BETWEEN 15.00 - 21.30.**



# Raymarine®

## The Raymarine Race Day.

**FIRST WARNING SIGNAL 09.00**

### Course 2 - 20 Miles

Start East of Ko Yao Noi  
 Round Ko Pang Starboard  
 Pass Ko Pak Bia to Port, Pass Ko Ka to Starboard  
 Round Ko Saya Taling and Pass Ko Kaya to Starboard  
 Through Gate Ko Hong (Committee boat to PORT)  
 Round Ko Ngang to Port  
 Pass Between Ko Deng and Ko Samet  
 FINISH between Committee Boat and Ko Ya Man

### Course 2A - 28 Miles

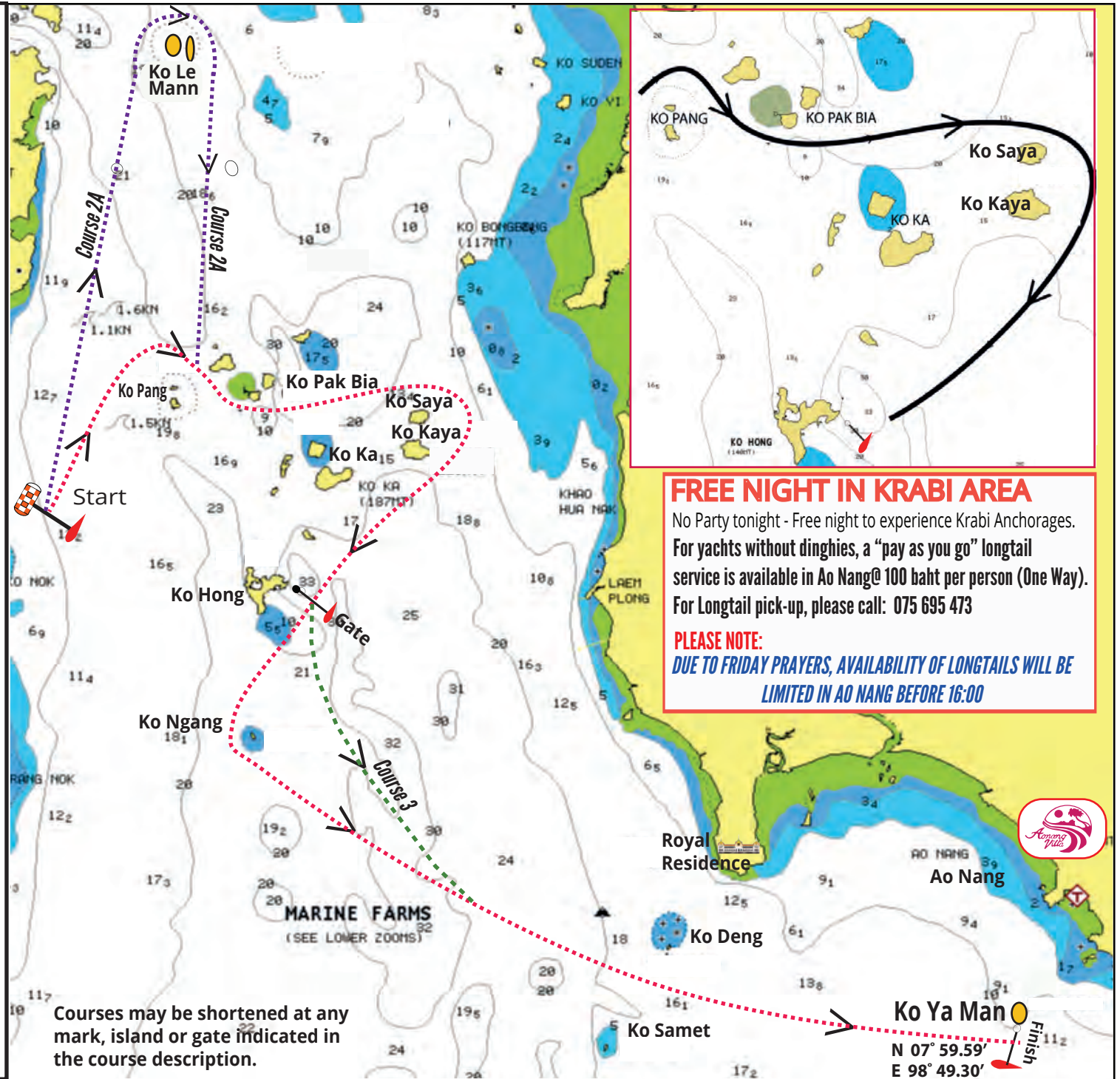
Start East of Ko Yao Noi  
 Round Ko Le Mann Group to Starboard  
 Pass Ko Pang Starboard, Pass Ko Pak Bia to Port,  
 Pass Ko Ka to Starboard  
 Round Ko Saya Taling and Pass Ko Kaya to Starboard  
 Through Gate Ko Hong (Committee boat to PORT)  
 Round Ko Ngang to Port  
 Pass Between Ko Deng and Ko Samet  
 FINISH between Committee Boat and Ko Ya Man

### Course 3 - 18 Miles

Start East of Ko Yao Noi  
 Round Ko Pang to Starboard  
 Pass Ko Pak Bia to Port, Pass Ko Ka to Starboard  
 Round Ko Saya Taling and Pass Ko Kaya to Starboard  
 Through Gate Ko Hong (Committee boat to PORT)  
 Pass Between Ko Deng and Ko Samet  
 FINISH between Committee Boat and Ko Ya Man



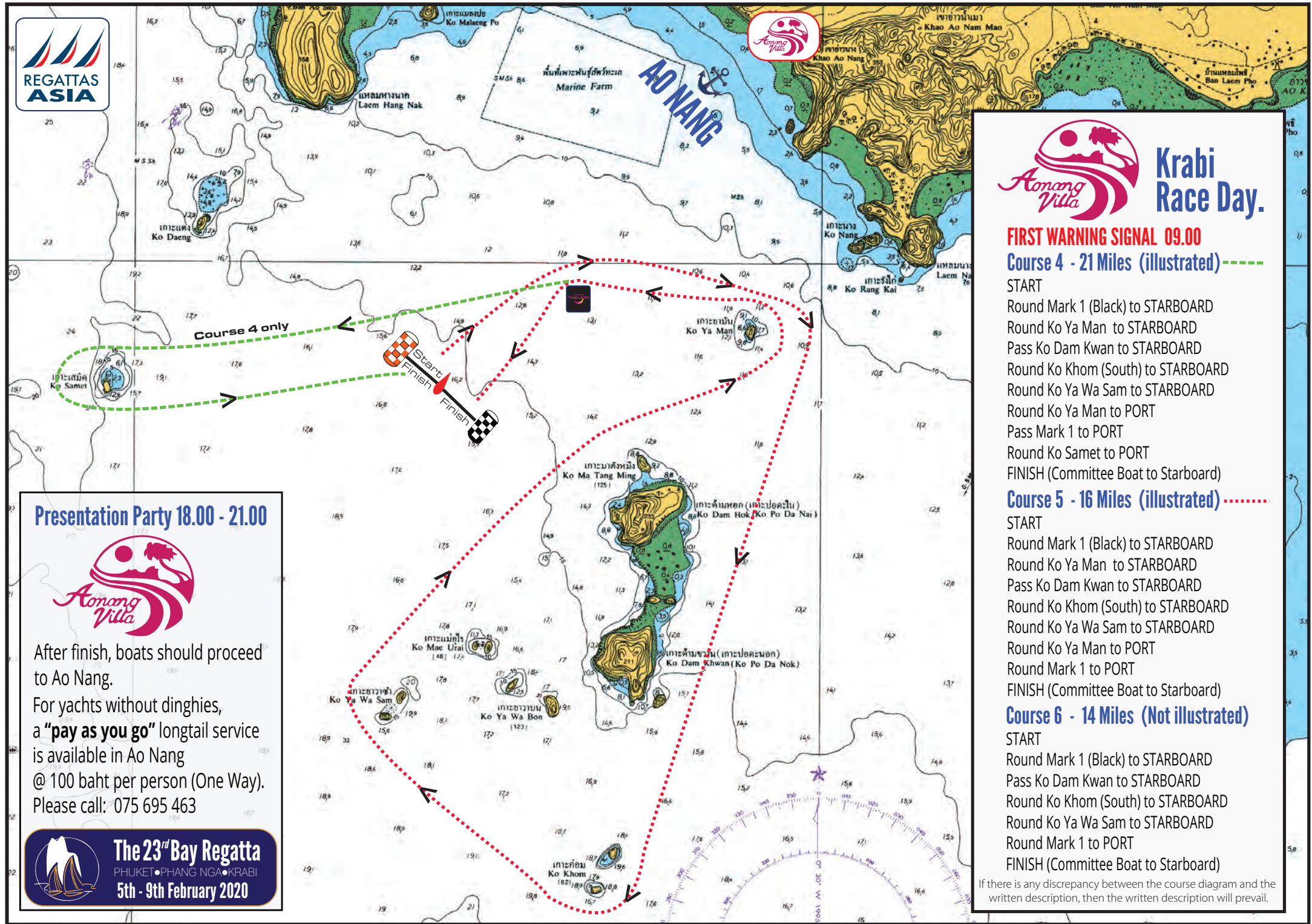
**The 23<sup>rd</sup> Bay Regatta**  
 PHUKET • PHANG NGA • KRABI  
 5th - 9th February 2020



Courses may be shortened at any mark, island or gate indicated in the course description.

**FREE NIGHT IN KRABI AREA**  
 No Party tonight - Free night to experience Krabi Anchorages.  
 For yachts without dinghies, a "pay as you go" longtail service is available in Ao Nang@ 100 baht per person (One Way).  
 For Longtail pick-up, please call: 075 695 473  
**PLEASE NOTE:**  
 DUE TO FRIDAY PRAYERS, AVAILABILITY OF LONGTAILS WILL BE LIMITED IN AO NANG BEFORE 16:00





# Krabi Race Day.

**FIRST WARNING SIGNAL 09.00**

**Course 4 - 21 Miles (illustrated) ---**

- START
- Round Mark 1 (Black) to STARBOARD
- Round Ko Ya Man to STARBOARD
- Pass Ko Dam Kwan to STARBOARD
- Round Ko Khom (South) to STARBOARD
- Round Ko Ya Wa Sam to STARBOARD
- Round Ko Ya Man to PORT
- Pass Mark 1 to PORT
- Round Ko Samet to PORT
- FINISH (Committee Boat to Starboard)

**Course 5 - 16 Miles (illustrated) .....**

- START
- Round Mark 1 (Black) to STARBOARD
- Round Ko Ya Man to STARBOARD
- Pass Ko Dam Kwan to STARBOARD
- Round Ko Khom (South) to STARBOARD
- Round Ko Ya Wa Sam to STARBOARD
- Round Ko Ya Man to PORT
- Round Mark 1 to PORT
- FINISH (Committee Boat to Starboard)

**Course 6 - 14 Miles (Not illustrated)**

- START
- Round Mark 1 (Black) to STARBOARD
- Pass Ko Dam Kwan to STARBOARD
- Round Ko Khom (South) to STARBOARD
- Round Ko Ya Wa Sam to STARBOARD
- Round Mark 1 to PORT
- FINISH (Committee Boat to Starboard)

If there is any discrepancy between the course diagram and the written description, then the written description will prevail.

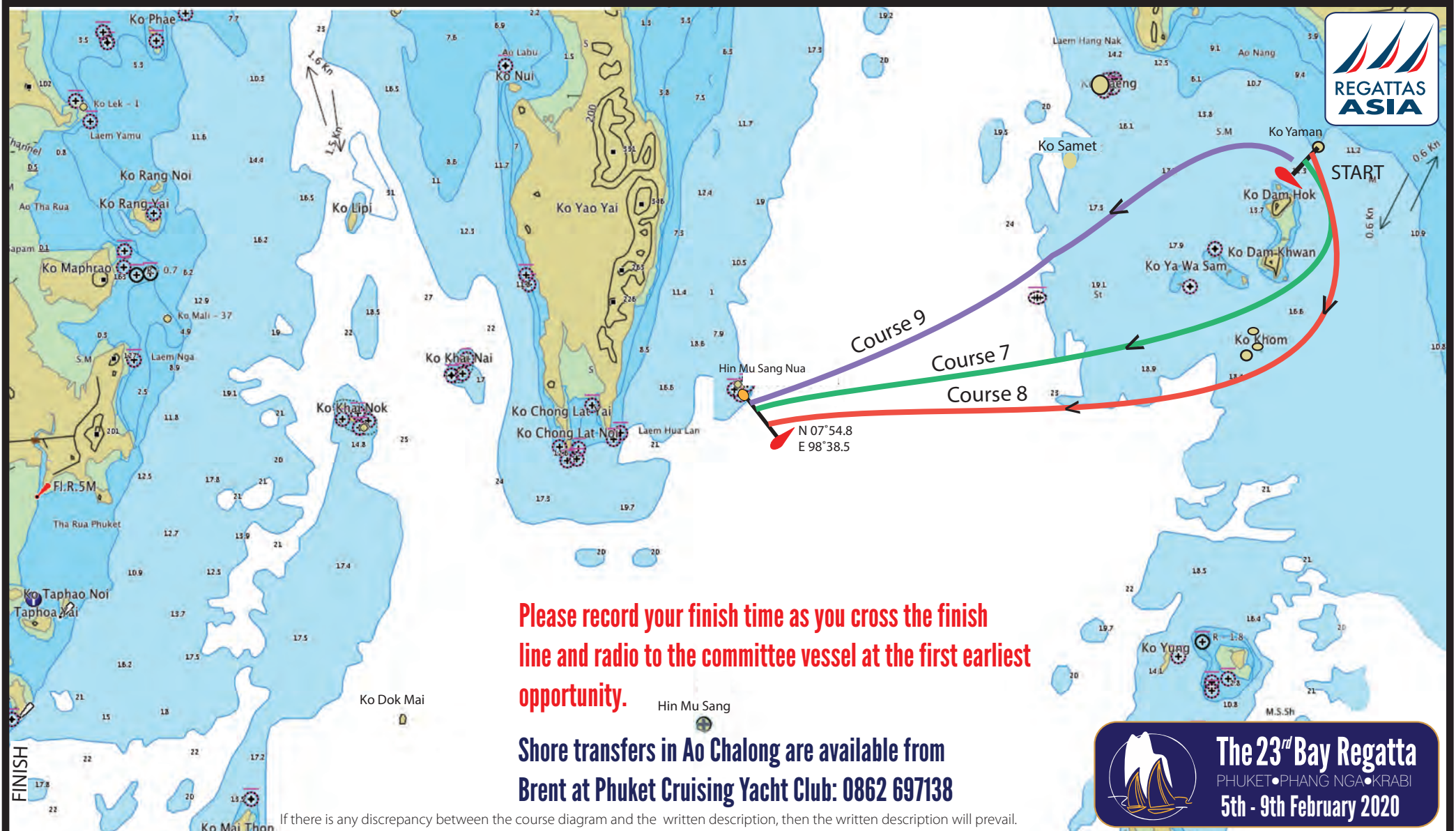
**Presentation Party 18.00 - 21.00**



After finish, boats should proceed to Ao Nang.  
For yachts without dinghies, a "pay as you go" longtail service is available in Ao Nang @ 100 baht per person (One Way). Please call: 075 695 463



**The 23<sup>rd</sup> Bay Regatta**  
PHUKET • PHANG NGA • KRABI  
5th - 9th February 2020




Please record your finish time as you cross the finish line and radio to the committee vessel at the first earliest opportunity.

Shore transfers in Ao Chalong are available from Brent at Phuket Cruising Yacht Club: 0862 697138

If there is any discrepancy between the course diagram and the written description, then the written description will prevail.



**The 23<sup>rd</sup> Bay Regatta**  
PHUKET • PHANG NGA • KRABI  
5th - 9th February 2020


**Course 7 - 14 Miles** 

START  
Round Ko Dam Hok to Starboard  
Pass Ko Dam Khwan to Starboard  
FINISH (Hin Mu Sang Nua)

**Course 8 - 17 Miles** 

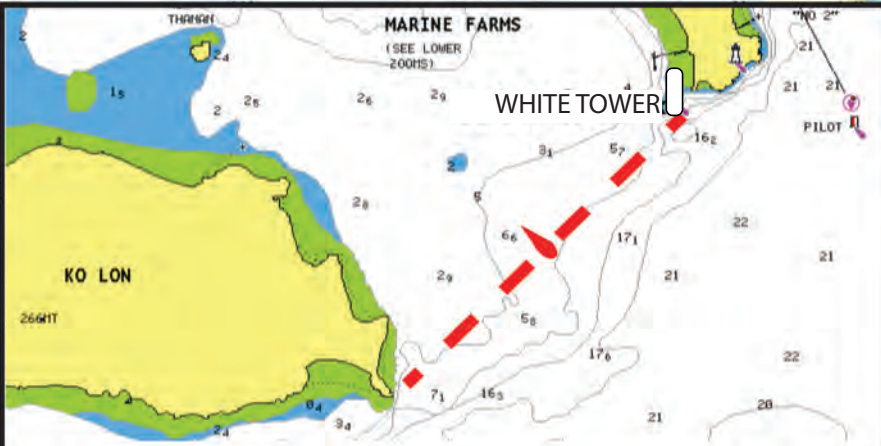
START  
Round Ko Yaman Starboard  
Pass Ko Dam Hok and Koh Dam Khwan to Starboard  
Pass Ko Khom Group to Starboard, FINISH (Hin Mu Sang Nua)

**FIRST WARNING SIGNAL 08.00**

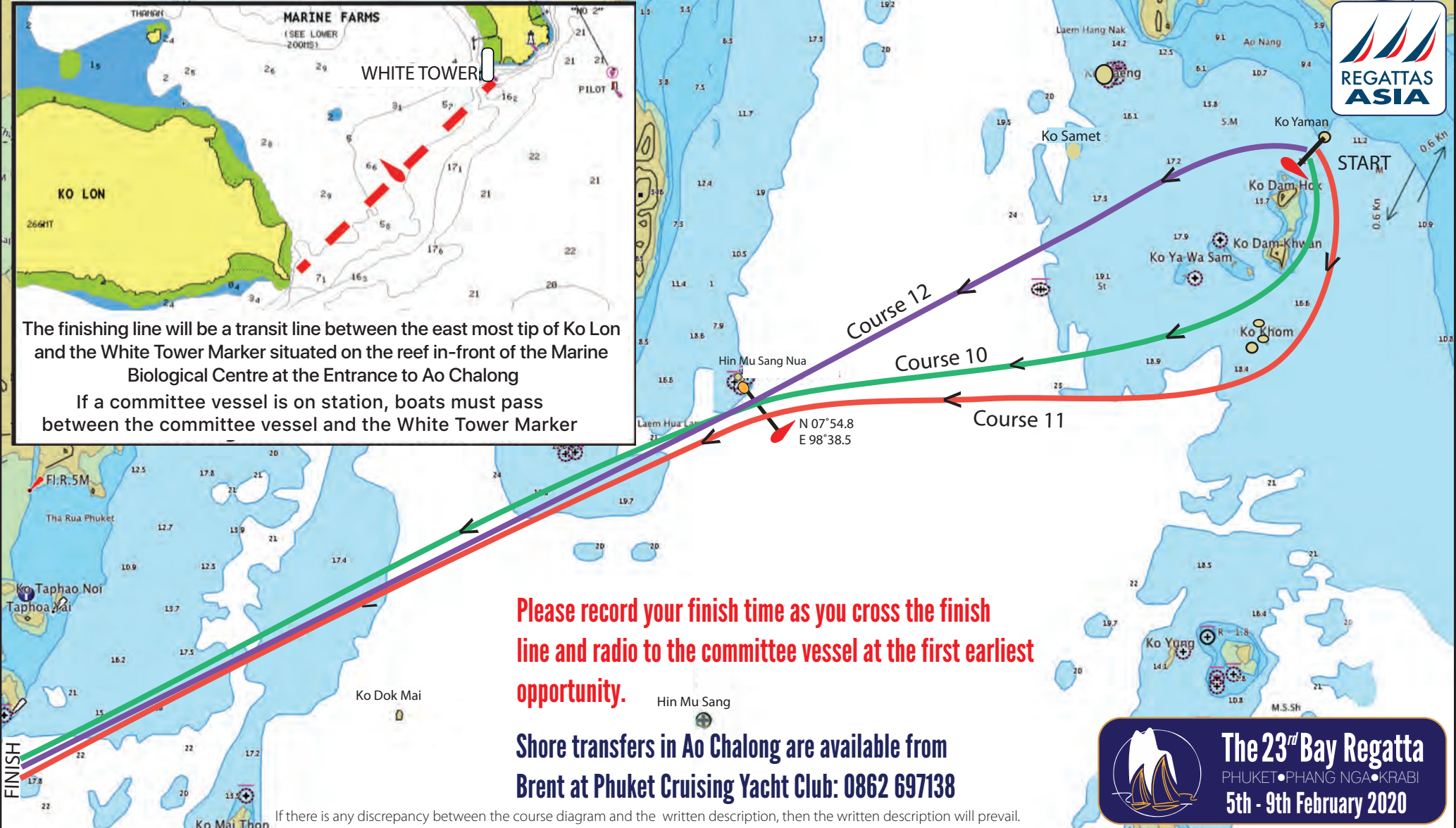
**Course 9 - 11 Miles** 

START (Down Wind, Committee Boat to Port)  
FINISH (Hin Mu Sang Nua)  
If there is any discrepancy between the course diagram and the written description, then the written description will prevail





The finishing line will be a transit line between the east most tip of Ko Lon and the White Tower Marker situated on the reef in-front of the Marine Biological Centre at the Entrance to Ao Chalong  
 If a committee vessel is on station, boats must pass between the committee vessel and the White Tower Marker



**Please record your finish time as you cross the finish line and radio to the committee vessel at the first earliest opportunity.**

**Shore transfers in Ao Chalong are available from Brent at Phuket Cruising Yacht Club: 0862 697138**

If there is any discrepancy between the course diagram and the written description, then the written description will prevail.



**The 23<sup>rd</sup> Bay Regatta**  
 PHUKET • PHANG NGA • KRABI  
 5th - 9th February 2020

**Course 10 - 30 Miles** █  
 START between Committee Vessel and Ko Yaman  
 Pass Ko Dam Hok to Starboard  
 Pass Ko Dam Khwan to Starboard  
 Through Gate (Hin Mu Sang Nua)  
 FINISH (Entrance to Ao Chalong - See Note.)

**Course 11 - 33 Miles** █  
 START between Committee Vessel and Ko Yaman  
 Pass Ko Dam Hok/Khwan to Starboard  
 Pass Ko Khom Group to Starboard  
 Through Gate (Hin Mu Sang Nua)  
 FINISH (Entrance to Ao Chalong - See Note.)

**FIRST WARNING SIGNAL 08.00**  
**Course 12 - 26 Miles** █  
 START (Downwind Committee Vessel to Port)  
 Through Gate (Hin Mu Sang Nua)  
 FINISH (Entrance to Ao Chalong - See Note.)





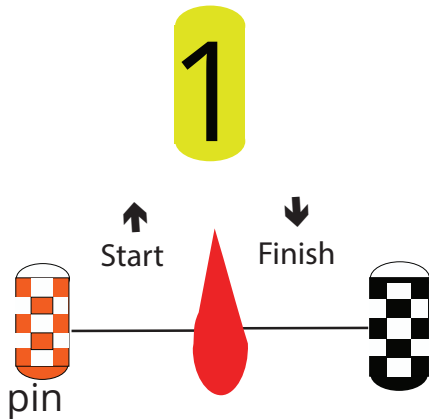
# Tide Timetables Phuket and Krabi



2

เกาะตะเภาน้อย (ภูเก็ต)  
Ko Thaphao Noi (Phuket)

ปากน้ำกระบี่ (กระบี่)  
Pak Nam Krabi (Krabi)



## Courses 13 - 18 Windward/ Leeward

- 13. START - 2 - 1 - 2 - 1 - 2 - Finish
  - 14. START - 2 - 1 - 2 - Finish
  - 15. START - 1 - Pin - 1 - Pin - 1 - Finish
  - 16. START - 1 - Pin - 1 - Finish
  - 17. START - 2 - Pin - 2 - Pin - 2 - Finish
  - 18. START - 2 - Pin - 2 - Finish
- All mark roundings to Port

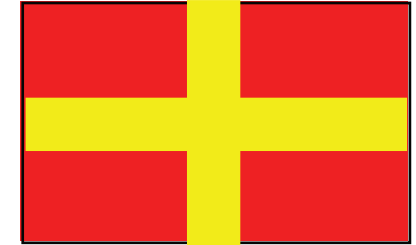
ภูเก็ต FEBRUARY				กระบี่ FEBRUARY			
เวลา	สูง (ม.)	เวลา	สูง (ม.)	เวลา	สูง (ม.)	เวลา	สูง (ม.)
TIME	HT (M.)	TIME	HT (M.)	TIME	HT (M.)	TIME	HT (M.)
1 0205 2.58	16 0306 2.49	1 0228 2.96	16 0324 2.84				
SA 0822 1.13	SU 0925 1.13	SA 0840 1.14	SU 0923 1.19				
1443 2.52	1550 2.55	1506 2.86	1608 2.93				
2045 1.40	2207 1.37	2103 1.45	2154 1.46				
2 0241 2.39	17 0416 2.23	2 0301 2.73	17 0418 2.52				
SU 0900 1.27	MO 1029 1.36	SU 0915 1.32	MO 1014 1.49				
1531 2.41	1715 2.40	1557 2.74	1720 2.72				
2141 1.53	2350 1.48	2152 1.64	2343 1.68				
3 0339 2.21	18 0613 2.10	3 0352 2.51	18 0615 2.32				
MO 0959 1.41	TU 1208 1.50	MO 1002 1.51	TU 1214 1.68				
1653 2.33	1857 2.39	1718 2.65	1913 2.68				
2326 1.60		2345 1.76					
4 0530 2.09	19 0152 1.36	4 0549 2.37	19 0202 1.55				
TU 1135 1.49	WE 0815 2.17	TU 1142 1.63	WE 0822 2.42				
1846 2.38	1401 1.42	1907 2.71	1420 1.58				
	2035 2.53		2047 2.86				
5 0120 1.48	20 0256 1.16	5 0137 1.58	20 0312 1.27				
WE 0727 2.16	TH 0918 2.34	WE 0744 2.46	TH 0932 2.66				
1315 1.42	1504 1.25	1344 1.52	1527 1.34				
2008 2.55	2128 2.71	2033 2.92	2145 3.10				
6 0232 1.24	21 0340 0.97	6 0244 1.30	21 0358 1.02				
TH 0838 2.32	FR 0957 2.50	TH 0858 2.67	FR 1017 2.87				
1431 1.24	1549 1.09	1455 1.31	1614 1.13				
2104 2.77	2203 2.87	2133 3.18	2228 3.29				
7 0321 0.99	22 0415 0.83	7 0337 1.00	22 0436 0.84				
FR 0931 2.51	SA 1028 2.63	FR 0953 2.90	SA 1053 3.02				
1527 1.04	1625 0.96	1553 1.09	1652 0.98				
2150 2.99	2234 2.99	2222 3.42	2301 3.43				
8 0403 0.76	23 0446 0.73	8 0426 0.74	23 0510 0.73				
SA 1015 2.69	SU 1056 2.74	SA 1041 3.10	SU 1122 3.13				
1614 0.86	1657 0.86	1644 0.89	1726 0.90				
2230 3.19	2302 3.07	2305 3.61	2330 3.51				
9 0445 0.57	24 0515 0.67	9 0512 0.52	24 0540 0.68				
SU 1056 2.86	MO 1123 2.83	SU 1125 3.27	MO 1149 3.22				
1658 0.71	1725 0.81	1730 0.74	1755 0.85				
2309 3.33	2329 3.11	2345 3.75	2357 3.55				
10 0526 0.43	25 0542 0.64	10 0555 0.38	25 0607 0.65				
MO 1135 2.98	TU 1149 2.89	MO 1206 3.41	TU 1215 3.29				
1740 0.63	1752 0.78	1813 0.64	1821 0.83				
2346 3.39	2355 3.10						
11 0606 0.37	26 0606 0.65	11 0024 3.82	26 0023 3.55				
TU 1215 3.06	WE 1215 2.93	TU 0635 0.31	WE 0631 0.65				
1820 0.62	1818 0.80	1246 3.51	1242 3.33				
		1851 0.62	1845 0.83				
12 0025 3.37	27 0020 3.04	12 0100 3.81	27 0046 3.50				
WE 0645 0.39	TH 0630 0.69	WE 0711 0.33	TH 0654 0.68				
1254 3.07	1241 2.92	1325 3.55	1307 3.35				
1900 0.67	1845 0.86	1925 0.67	1909 0.86				
13 0102 3.25	28 0045 2.94	13 0136 3.69	28 0110 3.41				
TH 0723 0.49	FR 0655 0.78	TH 0744 0.44	FR 0717 0.74				
1333 3.01	1306 2.88	1403 3.50	1332 3.33				
1939 0.79	1911 0.95	1957 0.80	1934 0.95				
14 0141 3.04	29 0109 2.81	14 0211 3.47	29 0134 3.26				
FR 0800 0.66	SA 0717 0.89	FR 0815 0.64	SA 0742 0.86				
1414 2.89	1331 2.80	1441 3.36	1401 3.24				
2018 0.97	1937 1.07	2030 0.98	2001 1.08				
15 0220 2.78		15 0245 3.17					
SA 0840 0.88		SA 0847 0.89					
1457 2.73		1521 3.16					
2104 1.17		2106 1.22					

## Important Information (All Courses)

### Special Signals

#### Return to Finish

A committee boat at a mark displaying **Code Flag R** (red background with yellow cross) means complete the current rounding or passing and race directly to the finish line.



### Schedule of Races

- Race Day 1 - 6th Feb
- Race Day 2 - 7th Feb
- Race Day 3 - 8th Feb
- Race Day 4 - 9th Feb

- First Warning Signal 09.00
- First Warning Signal 09.00
- First Warning Signal 09.00
- First Warning Signal 08.00

### Upcoming Thailand Regattas 2020

- Top of the Gulf (Pattaya)
- Samui Regatta
- Multihull Solutions Regatta
- Cape Panwa Phuket Race Week
- Phuket King's Cup Regatta

- 1st - 6th May
- 23rd - 30th May
- 10th - 13th July
- 15th - 19th July
- 28th Nov - 5th Dec

**The 23<sup>rd</sup> Bay Regatta**  
PHUKET • PHANG NGA • KRABI  
**5th - 9th February 2020**